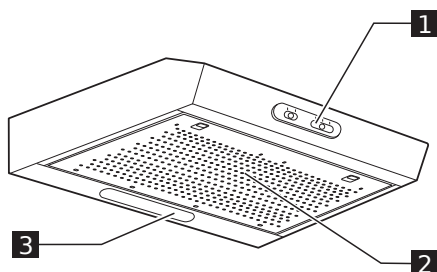


# USER GUIDE FOR EXTRACTOR FAN SWITCH ON LEFT HAND SIDE WALL

## Product description



- 1** Control Panel.
- 2** Grease filter.
- 3** Lighting unit.

## Control panel

### **A** Light button.

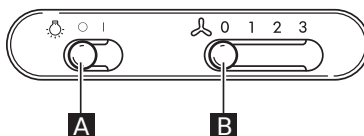
The light button has two positions.

To switch on the lights: move the button to the right.

### **B** Extraction power selection button.

The extraction speed switch has different settings, depending on the amount of steam and fumes.

To increase the extraction power: move the button to the right.



## Cleaning and maintenance

### **⚠** WARNING:

- Never use steam cleaning equipment.
- Disconnect the appliance from the power supply.

**IMPORTANT:** do not use corrosive or abrasive detergents. If any of these products accidentally comes into contact with the appliance, clean immediately with a damp cloth.

- Clean the surfaces with a damp cloth. If it is very dirty, add a few drops of washing up detergent to the water. Finish off with a dry cloth.

**IMPORTANT:** do not use abrasive sponges or metallic scrapers or scourers. Over time, these can ruin the surface.

- Use detergents specifically designed for

cleaning the appliance and follow the manufacturer instructions.

**IMPORTANT:** clean the filters at least monthly to remove any oil or grease residuals.

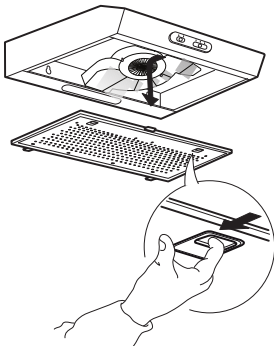
To clean the grease filter

The metal grease filter has an unlimited life and must be washed once a month by hand or dishwasher at low temperature and with a short cycle. With cleaning in a dishwasher the grease filter may become dull; this does not affect its filtering capacity.

**Grease filter maintenance:**

1. Unplug the appliance or disconnect the power supply.
2. Remove the grease filters: pull the spring release handle, then remove the filter downwards.

3. After cleaning the grease filter, remount in reverse order ensuring the entire extractor surface is covered.



- Regeneration procedure:
- Wash in the dishwasher at a MAX temperature of 70° or hand wash in hot water without using abrasive sponges (do not use detergents!)
  - Dry in the oven at a MAX temperature of 70° for 2 hours or dry at room temperature, standing the filter in a vertical position to facilitate drainage.

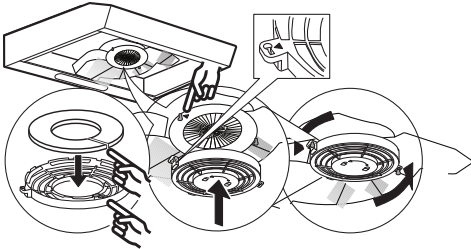
Charcoal filter maintenance (if the hood is installed in recirculation installation)

1. Pull out the plug or disconnect the power supply.
2. Remove the grease filter
3. If the carbon filters are already fitted (two filters that cover the protective grilles for the motor impeller) and have to be replaced, turn the central handle anti-clockwise to unlock them.
4. Open the two filter shells
5. Pull out the two circular mats
6. Proceed in reverse order to fit the new filters.
7. Refit the grease filters.

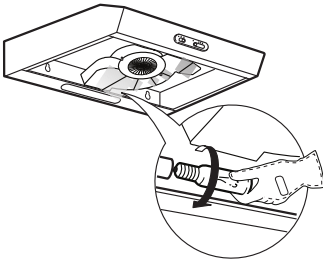
Unlike traditional charcoal filters, this charcoal filter can be washed and reactivated.


Care and cleaning long life Charcoal filter

- The anti-odour filter shall be washed and regenerated every 3-4 months (or more frequently if the hood is subject to intense use), up to a Max. of 8 regeneration cycle (in case of particularly intensive use it is recommended that you do not exceed 5



- Lamp maintenance
1. Disconnect the hood from the power supply.
  2. Open the extractor grille or remove the self-supporting grease filter.
  3. Replace the damaged lamp. Use E14 3W max LED lamps only.
  4. Refit the extractor grille or grease filter.
- IMPORTANT: make sure you don't touch the lamp with your bare hands.



Lamp	Power (W)	Socket	Voltage (V)	LCL	ILCOS D Code
	3	E14	230	55	DRGSB/C/UB-3/27/1B-230-E14-55

What to do if ...

Problem	Possible cause	Solution
The appliance does not work	There is no mains electrical power	Check for the presence of mains electrical power. Turn off the appliance and restart it to see if the faults persists.
	The appliance is not connected to the electrical supply	Check if the appliance is connected to the electrical supply. Turn off the appliance and restart it to see if the faults persists.
The hood's suction level is not enough	The suction speed is too low	Check the suction speed and adjust as necessary.
	The grease filters are dirty	Check that the filters are clean If not, clean the filters in the dishwasher.
	The anti-odors filters are dirty	Check that the anti-odour filters are properly washed as recommended
	The air vents are obstructed	Check the air vents for any obstructions and remove as necessary.
The light does not work	The LED is broken	For replacement, contact the Authorized Service Centre.

Before contacting the Authorized Service Centre:

- the type of fault;
- the model;
- the type and serial number of the appliance (given on the rating plate);
- the Service number (the number after the word SERVICE on the rating plate inside the appliance).

Switch the appliance on again to see if the problem has disappeared. If not, switch it off again and repeat the operation after an hour.

If your appliance still does not work properly after carrying out the checks listed in the troubleshooting guide and switching the appliance on again, contact the Authorized Service Centre, clearly explaining the problem and specifying:

**SERVICE** 0000 000 00000

